

CLEEVE PRIOR NEWSLETTER



April allotment

APRIL 2024

The Benefice of the East Vale and Avon Villages

40 Days

Do you remember when you were 40? I do, I had a big party for 40 family and friends. We've just had 40 days in Lent and it was pouring with rain the other day (again) and I got to thinking about Jesus spending 40 days in the desert being tested, and about Noah being tested by the flood and building the Ark. Folklore has it that it rained for 40 days and 40 nights – can you imagine! No wonder it flooded. However all ended well when God made the waters recede and the Ark came to rest on Mount Ararat. This was because God made a covenant with Noah who had “found favour in the eyes of the Lord” (Gen6:8). When God beheld the corruption of the earth and was determined to destroy it, he gave Noah divine warning of the impending disaster and made a covenant with him that if Noah built the Ark to God's specifications, God would save Noah, his family and all the beasts of the earth and birds of the air. The same covenant God made with Adam.

There is another Ark in the Bible, the Ark of the Covenant. According to the book of Exodus God instructed Moses to build the Ark during his 40 day(!!) stay upon Mount Sinai. Moses, like Noah also made a covenant with God and was also given the dimensions of the Ark by God, and in it were placed the two stone tablets containing the 10 commandments. It is said that the Israelites who were in exile in Egypt carried the Ark 40 days (!!) to the Red Sea where again God made the waters recede so that God's chosen people could pass to the promised land, just as He saved Noah and his family. I wonder how many of us have agreed a covenant with God to do as He commands and be saved by His grace? Personally I am looking forward to having 40 winks in 40 degree heat on 40 sunny days in summer. You never know, miracles do happen!

Alan Bache, LLM

Services at St Andrew's Church April 2024

Sun 7th April 11 am Benefice Eucharist at Offenham
Sun 14th April 11 am Morning Praise Rod Carless
Sun 21st April 11 am Holy Eucharist Revd Susan Renshaw
Sun 28th April 11 am Matins Rod Carless
Sun 5th May 11 am Holy Eucharist Revd Joanna Fielding

Priest in Charge Revd Joanna Fielding revjo.eastvale@gmail.com
Churchwardens Rod Carless 01789 773357 Lis Hughes 01789 772578
Safeguarding in our Benefice Safeguarding Officer – Lisa Farmer Tel.01386 40401
Safeguarding Advocate –
For enquiries concerning Weddings, Baptisms and Funerals contact Faith Quin
eastvaleavon.churches@gmail.com

St. Andrew's Church

Spring Table Top Sale

Saturday 20th April 2024

10.30am – 12.30pm

Coffee Cake Stall Bring and Buy

Raffle

PARISH COUNCIL NEWS

April 2024

The Council meet on the second Monday of every month at 7.30pm, and we allocate time on the agenda for your views, questions, and issues to be raised. You can see full details on our website cleevepriorparishcouncil.co.uk.

CLLr Peter Wilson: Chairman peterwilson@cleevepriorparishcouncil.co.uk

CLLr Mary Smith: Vice Chair marysmith@cleevepriorparishcouncil.co.uk

CLLr Ian Robinson: ianrobinson@cleevepriorparishcouncil.co.uk

CLLr Kevin Mellor: kevinmellor@cleevepriorparishcouncil.co.uk

CLLr Bryan Eden: bryaneden@cleevepriorparishcouncil.co.uk

CLLr Sandra Vincent: sandravincent@cleevepriorparishcouncil.co.uk

CLLr Nicky Marshall: nickymarshall@cleevepriorparishcouncil.co.uk

Springtime is now in bloom and Cleeve Prior is more colourful by the day. Let's continue to support the Kings Arms pub initiative for its future success as well as our Church, and our small and awesome School which will have more events in the warmer months. There will be more details on the DD commemoration events in June and it will be a great opportunity for our community to come together.

To keep up to date see cleevepriorparishcouncil.co.uk, our village website cleevepriorvillage.co.uk and our village Facebook page facebook.com/cleevepriorvillage.

Please contact me on the details below with any comments, ideas, or concerns you'd like the Parish Council to address.

Stacey Smith
Clerk and RFO to the Parish Council
clerk@cleevepriorparishcouncil.co.uk



**Cleeve Prior
Village Picnic
Saturday 8th June 2024
12 noon – 4pm**

Please join us on Saturday 8th June on the School Playing field for a Fun Day and Picnic from 12 noon – 4pm. Please bring your own picnics and chairs. There will be Fun Activities, Entertainment, Raffle and Games.



**Cleeve Prior
Meal, Music and Fun
Saturday 8th June 2024 7pm – Late**

Please join us on the Evening of Saturday 8th June in a Marquee on the School Playing Field for an evening of music, food and enjoyment to Commemorate the 80th Anniversary of the D Day landings.

Tickets on Sale Now! £20 per person. All proceeds to go toward the establishment of a permanent War Memorial in the village.

For tickets please contact:

sandravincent@cleevepriorparishcouncil.co.uk

marysmith@cleevepriorparishcouncil.co.uk

Worcestershire On-Demand Bus Service

A message from Judith Ciotti

As a Wychavon District councillor for Cleeve Prior, I know a little about the lack of public transport and the few alternatives existing for non-car drivers.

This new scheme (detailed in news item below) is attempting to bridge the gap with a new on-demand bus service. If residents show that they would welcome the chance to try this out by either contacting our MP or Worcestershire County Council (who operate the Worcestershire On Demand transport) there is much more likelihood that South Worcestershire will be chosen for the next rollout.

I am also happy if residents get in touch with me If they have any questions or difficulties responding about this and I can pass information or comments on.

Judith Ciotti (Judith.ciotti@wychavon.net)

Nigel Huddleston MP calls for constituent input for a future expansion to the Worcestershire On-Demand bus service.

Monday, 4 March, 2024

Nigel Huddleston MP is calling on residents in the south of his constituency to provide their input into a possible future expansion to the Worcestershire On-Demand bus service.

The bus service is booked via a smartphone app and collects passengers from virtual bus stops, and has been hailed a success since it launched in Bromsgrove during the pandemic. A new Malvern rural zone was launched in 2023, and now Nigel Huddleston MP has confirmed that he is in talks with County Council officials about bringing the service to cover parts of the Vale of Evesham, including Broadway.

Nigel said: "I was recently contacted by Cllr Mike Rouse at Worcestershire Highways to confirm that the council is looking to roll out a third zone for demand-responsive transport, and that Evesham and the surrounding areas has seen selected for consideration. The zone has not yet been finalised, so there is an opportunity for residents to feed into my office their suggestions which I will pass on to the county council."

The expansion of Demand Responsive Travel (DRT) in the south of Worcestershire builds on improvements to local services in Droitwich, including the establishment of two new bus routes serving the town.

Cllr Mike Rouse, Cabinet Member for Highways and Transport added:

“Traffic congestion through Evesham and the challenges associated with rural areas such as Broadway have been brought to my attention by Nigel Huddleston, the late Councillor Peter Griffiths covering Evesham, along with Councillor Emma Stokes, and Councillor Elizabeth Eyre representing Broadway. Collectively they have made a very strong case for this part of Worcestershire to benefit from demand-responsive buses, and I am delighted we are able to consider their requests.”



The Art Club

We have enjoyed an interesting few weeks since our Christmas break, welcoming new members and developing our observational skills with our still life projects. Our final weeks have been equally busy.

This month we had pleasure in welcoming back George, our visiting tutor from Artbase in Bidford on Avon. This time George supported our abilities to produce a landscape picture using acrylic paints. This proved a most enjoyable and action-packed morning and there were some lovely paintings produced. Everyone had opportunity to ask questions and gain the knowledge needed to continue with our work later. A big Thank You to George and Beth for coming along and giving such an informative and successful morning.

Our final weeks are also busy. Those who wished to participate have been painting pictures with the aim of decorating the windows of the telephone box. These will be mounted in due course. Others have continued with their own ideas and continue to produce some excellent work.

Our final meeting before the Easter break is on 21 March. We aim to begin again at 10am on 18 April for the summer term. All welcome, so if you would like to join the club please come along or contact me for more details.

Louise Conneeley

louiseconneeley@gmail.com, Tel 01789 772749



NEWS FROM THE SCHOOL



Dear Villagers,

I cannot quite believe that the Easter holidays are here already and we have been busy as ever in school. Can I please thank all of the villagers and the village nursery who offered and provided plants for our school grounds - we are always grateful for donations. We are more than happy to receive floral and plant donations throughout the year.

We had our SIAMS (Church) inspection on 26th February 2024. It is a shorter process than Ofsted but no less rigorous. Our inspector Caroline Unitt reported that, *"The wellbeing of pupils and adults is a high priority for all. The staff in school work closely as a team, supporting each other with care and compassion. This ensures all have a strong commitment and bond with this school, each other and its success. The needs of and care for vulnerable, disadvantaged pupils and their families is clear. This enables all to feel a strong sense of belonging. Through nurturing and support the opportunity for all to develop with confidence is evident."* As a result, we were judged to be living up to our foundation as a church school (which has replaced the judgement of good). Suffice to say we were very pleased with the outcome.

As I reported last month, we successfully performed our Viking Longship dance at the Henrician theatre on 28th February as part of the South Worcestershire dance festival. Our KS2 children performed and behaved impeccably throughout and I was very proud of them!

We have now completed our Lentern challenge of coins in our smartie tubes. We raised a fantastic £84.14 for Comic Relief which, given our size, is very impressive.

On 7th March it was World Book Day and the children came to school dressed as an adjective of their choice. We also held a Readathon to raise money to add books to our library. As of today, our figure stands at £208.00 which is magnificent.

Our Easter service is being led by Mother Jo and some of our children on the last day of term and I look forward to letting you know all about it next month!

Happy Easter
Mrs Laughlin



An update from your local policing team...

Who are your local Neighbourhood Officers for the 'Rural North' area? Your local Neighbourhood Officer is PC Alex Prentice. The Rural North patch includes: Offenham, Bretforton, Cleeve Prior, Pebworth including Meon Way Gardens, Honeybourne, North, Middle and South Littleton.

The Evesham Safer Neighbourhood Team are actively now more than ever involved with our Evesham SNT Facebook page. Please follow Evesham SNT to keep up to date with our activities and to see when our local drop in/engagement sessions are.

Engagements

As you may know, we do weekly engagement sessions in each of the villages across the Evesham Rural North patch. We are always open to listening to the public if they believe the engagements with the public should be done differently. Please, if have any ideas on how we can better engage with the public, please let me know by emailing the above email address.

What have we been up to?

Various schools have been visited with regards to parking. Again, can parents please park sensibly when dropping off/picking up children, and if you can, please walk! Be mindful of junctions, dropped kerbs and people's driveways and please do not drop children off whilst in the middle of road. Schools have also been visited to engage with the children. We have spoken about all sorts! How to become a police officer, the kit we wear, what a day in the life of an officer looks like, along with general Q&A's.

Drop-in sessions/engagement sessions are attended throughout the month on various days including weekends. Please attend these if you feel the need to. On average these are done 1-2 times a week within the Rural North patch so there are plenty of opportunities to come and meet your local officer.

Various coffee mornings have been attended and crime prevention presentations have been provided to the local residents.

All of the above is sent through Neighbourhood Matters. We are encouraging people to sign up to this service as it's a great way of finding out what we are up to and where we will be. Please ensure you sign up to this free service.

Take a look at the website for further information:

<https://neighbourhoodmatters.co.uk/>

PC Alex Prentice 21115

Safer Neighbourhood Officer | Evesham Rural North | West Mercia Police

Evesham Police Station, Abbey Road, Evesham, WR11 4SS

Mobile: 07811 973304 **Direct Dial:** 101 or 0300333300

Personal email: alexandra.prentice@westmercia.police.uk

SNT email: eveshamrn.snt@westmercia.police.uk



CLEEVE PRIOR
WAR MEMORIAL VILLAGE HALL
email: cleevepriormemorialhall@gmail.com

The Trustees of the Memorial Village Hall are looking for villagers who can help as volunteers on the Management Committee. The work of the committee is vital to the running of the Hall and its continued use by the community. Being a member of the committee will not take much of a person's time but we would appreciate the help and new ideas.

If you are interested and would like to talk to a Committee member, please email the address above.

Thank you,

The Trustees

Restoration of the Memorial Plaques

The Hall is the village War Memorial to those who fell and took part in the two World Wars. This is commemorated in the plaques which can be seen mounted on the walls in the hall. These Memorial plaques, made of timber, are desperately in need of some tender care and work to close up cracks and to treat them for wood worms. We wondered if there is anyone in the community who has the skills to restore these important pieces of village history, to preserve them for the future.

If you think you could help with this project, we would very much like to hear from you through the memorial Hall email address.

Thank you.

Hall Management Committee

Ian Robinson



Cleeve Prior Heritage Trust

News from Noel

We are holding two fun family events during the latter part of the Easter holidays. Please come along and enjoy getting a little bit closer to nature.

Orchard Heritage Day - Friday 5 April

Heart of England Forest will be hosting visitors to showcase our wonderful orchards at Field Barn and the Hovel. There will be activities including trails to identify different trees. Ian Robinson will be on hand to talk about the history of the Hovel.

Timings: 11:00 - 2:00pm - Family activities
 12:00 - 1:00pm - Hovel talks

Refreshments and toilets available

Snowdrop Planting Day - Saturday 6 April: 10:30 - 12 noon

If you have some snowdrops, aconites or primroses, please bring them along to Sanctuary Wood in Quarry Lane.

Are you looking for a meeting place?

We have a number of organisations who hold their meetings at Field Barn including Evesham Ramblers who recently enjoyed our facilities for their AGM. It's worth mentioning that we have an excellent meeting room that will accommodate up to 30 people seated in conference style. There is an adjacent kitchen, and WiFi is available throughout the Field Barn complex. These facilities can be hired and our charges are very reasonable. We can provide refreshments or you can do this yourself.

To book Field Barn please contact: garnettclarke@btinternet.com

If you would like to know more about our work have a look at our website. New Volunteers always welcome on Tuesdays 9.30 – 1pm

www.cleevepriorheritagetrust.co.uk; cleevepriorheritagetrust@gmail.com

CONSERVATION * PRESERVATION * EDUCATION

Registered Charity No.1063291

Cleeve Prior Ramblers

16 March 2024

Clifford Chambers is a most attractive village located alongside a stretch of the river Stour with a medieval church and a long wide street bordered by a green and lined with timber framed cottages. It has been, for the past few weeks, surrounded by muddy paths and soggy fields!

The sun was shining as we began our walk from the New Inn. We walked the length of the village before branching off along well-used farm tracks. The first section was very muddy but the rising ground took us up to a ridge where there were pleasant views over the Avon valley.

A combination of footpaths and short stretches of quiet lanes took us eventually to a convenient coffee stop where a collection of large logs have been arranged by the roadside for walkers to rest and enjoy the magnificent views westwards. The next stage took us to the small characterful village of Preston on Stour. Here we had a short unintended detour but this enabled us to see more of the lovely village houses.

Continuing northwards we passed through the grounds of Alscot Park, a grand country house in the Rococo style. Over recent years, the 4,000 acre estate has been developed into numerous enterprises, including forestry, farming and holiday lets. We had pleasant views across the deer park and water meadows.

We left the footpaths and took to a road alongside the river towards Atherstone - a small but very attractive village with a grand manor house and pleasant though now disused Victorian Church. From the Church, we turned on to a straight path across a number of fields to return to Clifford Chambers. The end of the walk was as muddy as the start but it did provide an opportunity to wash our boots in the deep puddles!

Returning to the New Inn we enjoyed a good lunch before heading off for an appointment with the six nations rugby on television. Despite early concerns about weather and ground conditions this was a very enjoyable walk. The Ramblers next outing is planned for 20th April.

Evelyn Wilson.

Cleeve Prior Gardening Club?

Several people have approached me recently to ask if we could consider restarting the gardening club.

If you would be interested in joining, please could you contact me via my email at rjonions@msn.com. In addition I would be interested to hear your views regarding what subjects you would like covered by speakers.

Many thanks in advance

Roger Onions

Did you know?

Did you know that Cleeve Prior was a favoured area for Neolithic, Bronze, Iron Age and Roman settlements and finds from these periods indicate a long period of settlement activity in this vicinity.

For instance, the village and its immediate surroundings are rich in Romano-British archaeology. Remains and finds include 2nd to 4th-century wall foundations, pottery, jewellery and an amazing discovery of some 400 gold and 2,000 silver and bronze coins – The Cleeve Prior ‘Roman Hoard’. The ‘Roman Hoard’ was discovered in 1811 and was for many years regarded as the largest find of Roman Gold in Britain.

It was found in a field on the left-hand side of the road between North Littleton and Cleeve Prior by a 10-year-old ploughboy - Joshua Baylis. His boss, Mr Sheppey, after trashing the boy, took the gold, silver and bronze coins but being an uneducated man started spending them (in the Kings Arms probably) which brought them to the attention of a Mr Bennet who offered to take them to London to sell. Bennet sold the coins and gave money to Sheppey who bought a house and garden in Littleton – the boy got the trashing but not a single coin.

This is the second of a series of facts, legends and points of interest about Cleeve Prior, which have come to light during research carried out by the Cleeve Prior Chroniclers.

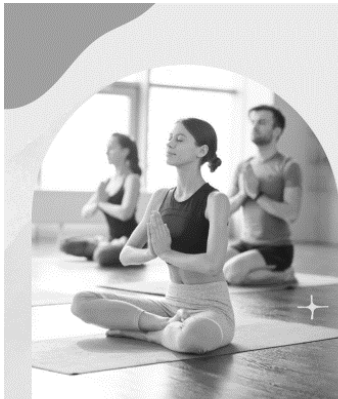
Douglas Carr

**Pershore Choral Spring Concert
An Evening with Beethoven**

Saturday 11 May 2024, 7.30 pm, Pershore Abbey

Mass in C
Choral Fantasia
Hallelujah Chorus (from The Mount of Olives)

Tickets from Susan Mortimer, 773453



YOGA CLEEVE PRIOR
MEMORIAL HALL

WEDNESDAYS 18:30 - 19:30

CONTACT CARLY TO JOIN
07774 950411

All abilities welcome

Can I help you?

Hello my name is Daniel, and I live in the village, I would like to offer my services doing odd jobs: dog walking, gardening, painting, pet sitting, etc. I'm around during the Easter break until 19 April. If you would be interested, please call me on 01789 773045. References are available.

JCS Motor Engineer - formerly Cleeve Prior Garage
Offering a full range of garage services at competitive prices



Servicing, Tyres, Diagnostics,
MOT Preparation and Repairs
Free local collection and return of
your vehicle

Over 40 years in the trade!

John: 07977 333719

jcsmotors@gmail.com

Location – Rear of TJ Auto Electrics, Crossleigh, The Cross,
Offenham, WR11 8RB

Food Fayre

Established 1973, Catering for all occasions

Canapés, Casseroles and Desserts
Cocktail, Lunch and Dinner parties
Freezer food for individuals and families
Buffets, breakfasts, suppers, hampers and cakes

For hire:

China, cutlery, linen and champagne glasses and all you need in your
kitchen and for a party

Meals, prices and menus to suit individual requirements
can be delivered or cooked and served at your home or venue.

Cairi Dyson, Email: cairid@yahoo.co.uk

Tel: 01789 491417, 07803 720184

London Marathon – Here I go again!!!

For 2024, I have challenged myself with three big London running events.
London Winter 10k run on 25 February – completed!

London Landmarks Half Marathon on 7 April

And finally, the London Marathon on 21 April

I have been training hard since the beginning of the year, running in every kind of weather (very wet this year!!!) to be able to take on this massive challenge.

I am trying to raise as much as possible for Mind, an amazing charity who do fantastic work supporting those with mental health conditions and raising much needed awareness.

If you are able and would like to make a donation, then any amount would be so much appreciated.

[Justgiving.com/page/amandacopperthwaite2024](https://www.justgiving.com/page/amandacopperthwaite2024)



Amanda Copperthwaite Select Mortgages

With the cost-of-living crisis and the ever-changing interest rates, it's more important than ever before that you use the

services of a fully qualified mortgage broker to help you with your biggest financial commitment.

Whether you are moving home, needing a remortgage, looking to raise capital or simply looking for the next best deal, I can research the whole of market to ensure you get the most competitive deal to suit your circumstances.

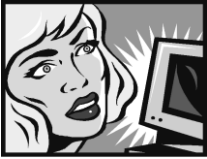
Providing personal, independent and confidential advice on all residential and buy to let mortgages, and not forgetting that important mortgage protection insurance.

I will be able to guide you through the whole process to take away any unnecessary stress and be there for you from your initial enquiry through to mortgage completion.

Give me a call 07785 270217 to find out what options are available to you or drop me an email amanda@select-mortgages.com

Select Mortgages UK Ltd is authorised and regulated by the Financial Conduct Authority. FCA 571378

Your home may be repossessed if you do not keep up with your mortgage repayments



eezyPC

. . . *is fixing IT*

Computer and Laptop repairs
Microsoft Certified Profesional
Wireless * Broadband * Hardware * Software
On-Site * Home Visits * 01386 576132

MG Roofing Repairs

No job too small.

Slates, tiles, ridge tiles, leadwork, Guttering, Firestone Flat Roof Systems,
Chimneys, repointing.

Storm Damage and Insurance work welcome
Stratford upon Avon and surrounding areas
01789 490672, 07799 870848

mgroofingservices@btinternet.com,

[42 The Close, Cleeve Prior](#)



DOG WALKING SERVICES

PAWs in MOTION.

Vicky @ Blacksmith Cottage on Main St, Cleeve Prior

New Dog walking service in Cleeve Prior and its
surrounding 10-mile radius.

Petplan Insured, with DBS. CPS, First Aid, currently working towards a Canine
Behaviour Diploma.

www.paws-in-motion.co.uk

For further info please call or Whatsapp 07508 595165. Or email Vicky29@me.com



D. Grace Plumbing and Heating

Mobile: 07428 303733; Email: darren.grace@yahoo.com

Main Street, Cleeve Prior, Evesham

New to the village, references supplied

Services:

Gas safe registered - Heating system installations

Heating system maintenance - Bathroom installations

Furrow Furniture and Kitchens

Established 24 years

Kitchens - Hand built or ready made

Worktops - Granite, quartz and timber

Studies

Wardrobes

Bookcases

All internal cabinetry catered for.

Bidford based workshop and showroom

Contact Matthew 07770 582331



VILLAGE and LOCAL EVENTS

Date	Event	Time	Venue
5 Apr	Orchard Heritage Day	11 – 2pm	CPHT
6 Apr	Snowdrop planting	10.30 – 12	CPHT
7 Apr	Quiz Night	7 pm	Hall
8 Apr	Parish Council Meeting	7.30 pm	Hall
20 Apr	Table-top sale, PCC	10.30 am	Hall

Cleeve Prior Art Group meets in the Hall at 10 am on Thursdays.

Pilates classes are held on Friday mornings in the Hall at 9.30 and 10.30 am.

The CP Bowls Club meets in the Hall on Tuesday afternoons and Thursday evenings, Contact Les Bratt on 01789 773651.

Yoga with Carly in the Hall, Wednesdays, 6.30 to 7.30 pm

Kings Arms Tavern opening times to be announced.

Useful contact details:

To book the **Memorial Hall**: cleevepriormemorialhall@gmail.com

To join the **village email list**: cleevepriormemorialhall@gmail.com

To book **Field Barn**: garnettclarke@btinternet.com

EVESHAM RURAL NORTH SAFER NEIGHBOURHOOD TEAM

Up-coming Cleeve Prior Drop-in Sessions with your Local Police Officers at the Village Hall:

Thursday 11th April 10am

Thursday 25th April 10am

[PC Alex Prentice 21115](mailto:PC.Alex.Prentice@21115)

St Joseph The Worker Catholic Church, Bidford

The Presbytery, Quinney's Lane

Rev Father Stephen Squires

07484 719463

The Church Rotas for April

Sidesmen

7 Apr	No service at Cleeve
14 Apr	Mr C Greenwood
21 Apr	Mr A Taylor
28 Apr	Mrs L Hawkins
5 May	Mrs L Hughes

Church Flowers

7 Apr	Mrs D Jackson
14 Apr	Mrs A Carless
21 Apr	Mrs A Carless
28 Apr	Mrs G Carr
5 May	Mrs G Carr

Church Cleaning

Mrs S Lasota
Mrs J Winter
Mrs L Hughes
Mrs J Franey
Mrs S Richards

Memorial Hall 200 Club

March Draw

£100: Daniel Young

£50: Sheila Debens

Copy for inclusion in the **May** edition

By Tuesday 23 April

Please submit copy by email to the following
email address: cleevepriornewsletter@gmail.com

or contact the Editor, Susan Mortimer (773453)

This Newsletter is published by St. Andrew's PCC